



# Swift Current

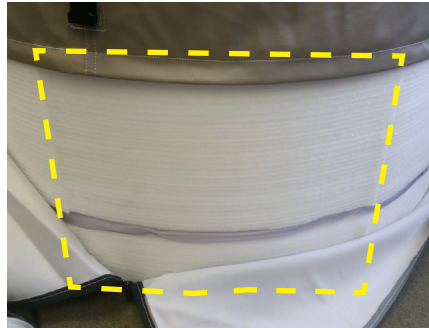
## North American Instruction Addendum

**Here are a few extra tips to ensure your Swift Current is assembled correctly, because we want you to start enjoying your tub as soon as possible!**



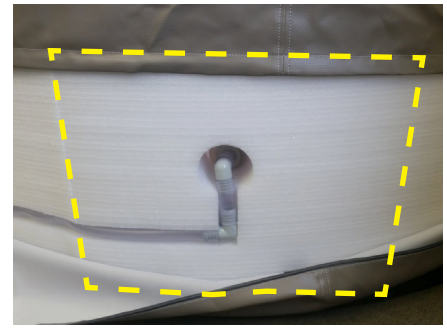
- **Wall Panel 1:**

Contains holes to fit Pipe Connectors from Control Pack, and Drain Valve. Ensure all holes match exactly (foam & liner)



- **Wall Panel 2:**

Contains slit for clear Intake Pipe to feed from Wall Panel 3 into Wall Panel 1



- **Wall Panel 3:**

Contains port for clear Intake Pipe to insert into and begin feeding around the tub, through Wall Panel 2, towards the Control Pack located on Wall Panel 1

- Loosen and remove clamp that comes on Control Pack. Attach clear Intake Pipe. Place clamp around Intake Pipe (fed through exterior foam Wall Panels 1-3) and fasten clamp with a flat-end screwdriver, as close to the Pump Connector as possible. Ensure seal is water tight!



- Also, ensure that the Blower Check Valve, located under the Control Pack, is tightly secured. These can sometimes become dislodged during shipping, and cause tub malfunctions.

**ENJOY YOUR SPA!**